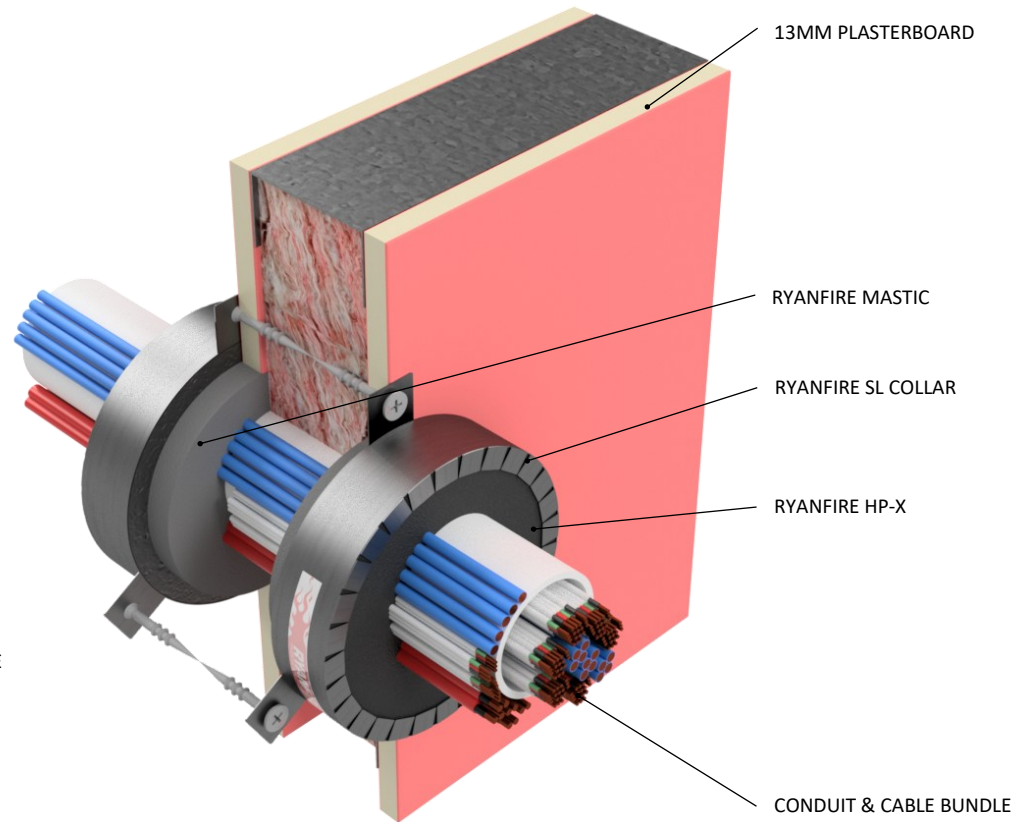


### INSTALLATION INSTRUCTIONS

1. ENSURE THE APERTURE IS CLEAN AND FREE OF DUST AND DEBRIS.
2. APPLY RYANFIRE MASTIC TO THE ANNULAR GAP BETWEEN THE PENETRATION AND THE PLASTERBOARD.
3. SELECT THE CORRECT SIZE RYANFIRE SL COLLAR TO FIT AROUND THE BUNDLE.
4. POSITION THE SL COLLAR AROUND THE BUNDLE AND SLIDE IT ALONG UNTIL IT IS AGAINST THE WALL. FIX INTO PLACE WITH PLASTERBOARD SCREWS. ENSURE ALL THE FIXING POINTS ARE USED.
5. APPLY RYANFIRE HP-X INTO THE ANNULAR GAP BETWEEN THE BUNDLE AND THE COLLAR, TO THE FULL DEPTH OF THE COLLAR.
6. REPEAT THIS PROCESS ON THE OPPOSITE SIDE OF THE WALL.



<b>Products:</b>	<b>RYANFIRE SL COLLAR RYANFIRE HP-X RYANFIRE MASTIC</b>
<b>Approvals:</b>	<b>AS 1530.4:2014/AS 4072.1:2005</b>
<b>BK:</b>	<b>346</b>
<b>Ref:</b>	<b>25SFR00043</b>
<b>ID:</b>	<b>D</b>
<b>Scenario:</b>	Penetration seal to PVC conduit & mixed cable bundle
<b>Services:</b>	Up to: Ø50mm PVC conduit 5x TPS, 5x data, 5x fire alarm
<b>Construction:</b>	90mm FR plasterboard / Masonry wall
<b>Annular Gap:</b>	6-9mm
<b>Aperture:</b>	Max Ø83mm
<b>Fire Integrity:</b>	60 minutes
<b>Fire Insulation:</b>	60 minutes

Web based drawings are for example only. Fire performance of any system is dependant on, but not limited to size of opening, substrate, if penetrations are passing through, type, size and number. Please refer to Ryanfire technical department for detailed and specific fire performance information.



RYANFIRE Technical Support:  
info@ryanfire.co.nz - Tel 09 443 0362

Drawing Title  
**SL Collar to conduit & cable bundle  
90mm plasterboard wall**

Scale <b>NTS</b>	Date <b>December 2025</b>
---------------------	------------------------------

Drawing Number <b>V36.20</b>	Rev <b>1.0</b>
---------------------------------	-------------------

**All errors and omissions excepted.** The information contained within this drawing is believed to be correct on the date of publication, and is based upon tested and certified solutions. The policy of **Ryanfire Products** is one of constant improvement. Installers must ensure that they are following the latest published drawings, test evidence and instructions. Whilst **Ryanfire Products** will endeavour to keep its publications up to date, the accuracy of the information contained within this drawing may be affected by pertinent changes in the law or regulatory requirements and alterations or amendments to the specification of **the manufactured** products. Terms and conditions of sale apply.

**Ryanfire Products** owns and has copyright to these drawings. They are to be used only for the purpose for which they were intended and supplied and are not to be sold, transferred or made available for use by a third party. Any misuse of these drawings will result in legal proceedings.