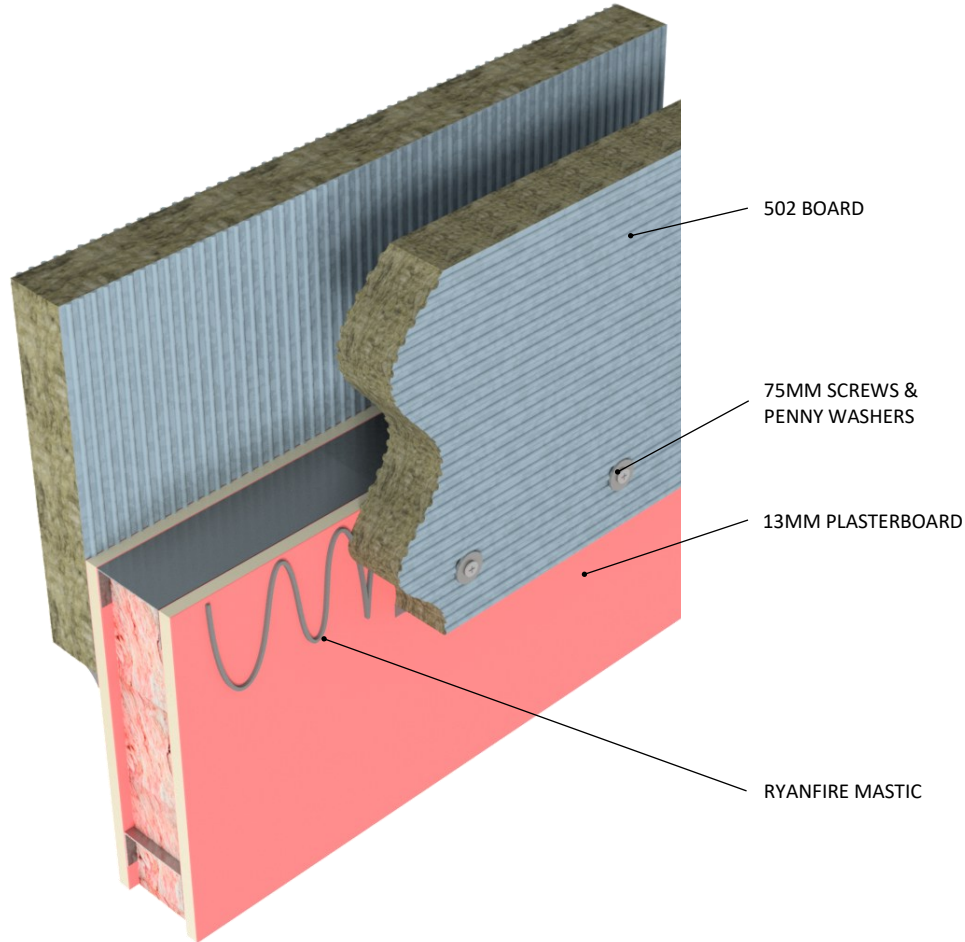


INSTALLATION INSTRUCTIONS

1. ENSURE THE APERTURE IS CLEAN AND FREE OF DUST AND DEBRIS.
2. APPLY RYANFIRE MASTIC TO THE SURFACE OF THE WALL WHERE THE 502 BOARD WILL MATE WITH THE WALL.
3. CUT THE RYANBATT 502 TO FIT OVER THE APERTURE. THE BOARD MUST HAVE A MINIMUM OF 100MM OVERLAP ONTO THE WALL.
4. APPLY RYANFIRE BRUSH GRADE MASTIC TO ALL CUT AND EXPOSED EDGES OF THE 502 BOARD.
5. INSTALL THE RYANBATT 502 OVER THE APERTURE AND FIX INTO POSITION WITH MINIMUM 75MM SCREWS & PENNY WASHERS, 50MM FROM THE EDGE AND AT CENTRES NOT EXCEEDING 200MM.
6. JOINTS SHOULD BE STAGGERED AT LEAST 300MM BETWEEN EACH SIDE OF THE WALL.
7. APPLY A NOMINBAL 10MM BEAD OF RYANFIRE MASTIC TO THE JUNCTION BETWEEN THE 502 BOARD AND THE WALL.
8. REPEAT THE PROCESS FOR THE OTHER SIDE OF THE WALL.



Products:	RYANBATT 502 RYANFIRE MASTIC RYANFIRE BRUSH GRADE MASTIC
Approvals:	AS 1530.4:2014/AS 4072.1:2005
BK:	346
Ref:	255FR00043
ID:	A
Scenario:	Pattress fit linear seal to head-of-wall
Aperture:	Up to 400mm x no limit on length
Construction:	90mm FR plasterboard wall / Masonry wall
Fire Integrity:	60 minutes
Fire Insulation:	60 minutes

The fire rating may change depending on service penetration performance.

Web based drawings are for example only. Fire performance of any system is dependant on, but not limited to size of opening, substrate, if penetrations are passing through, type, size and number. Please refer to Ryanfire technical department for detailed and specific fire performance information.



RYANFIRE Technical Support:
info@ryanfire.co.nz - Tel 09 443 0362

Drawing Title
Ryanbatt 502 to head-of-wall linear seal
90mm plasterboard wall

Scale	NTS	Date	December 2025
Drawing Number	V53.46	Rev	1.0

All errors and omissions excepted. The information contained within this drawing is believed to be correct on the date of publication, and is based upon tested and certified solutions. The policy of Ryanfire Products is one of constant improvement. Installers must ensure that they are following the latest published drawings, test evidence and instructions. Whilst Ryanfire Products will endeavour to keep its publications up to date, the accuracy of the information contained within this drawing may be affected by pertinent changes in the law or regulatory requirements and alterations or amendments to the specification of the manufactured products. Terms and conditions of sale apply.

Ryanfire Products owns and has copyright to these drawings. They are to be used only for the purpose for which they were intended and supplied and are not to be sold, transferred or made available for use by a third party. Any misuse of these drawings will result in legal proceedings.