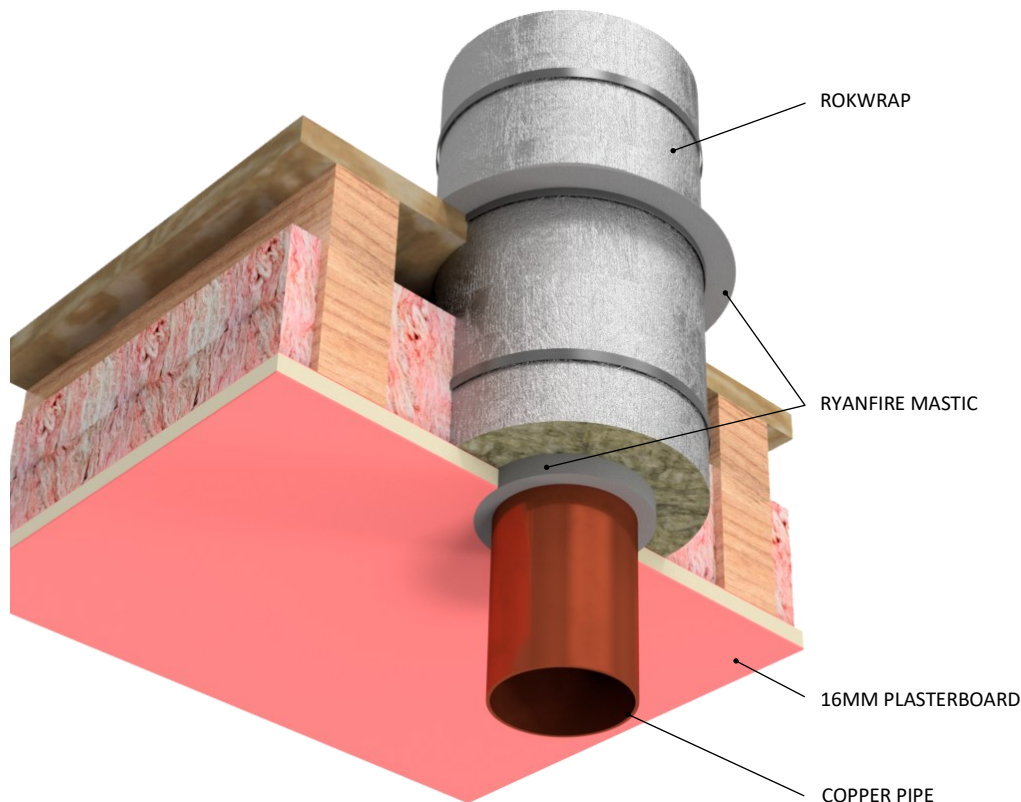


INSTALLATION INSTRUCTIONS

1. ENSURE THE APERTURE IS CLEAN AND FREE DUST AND DEBRIS.
2. APPLY RYANFIRE MASTIC INTO THE ANNULAR GAP BETWEEN THE METAL PIPE AND THE PLASTERBOARD TO THE FULL DEPTH OF THE PLASTERBOARD.
3. WRAP 1 LAYER OF 1000MM WIDE ROKWRAP AROUND THE PIPE, WITH A 100MM OVERLAP, ON THE TOP SIDE OF THE FLOOR.
4. SECURE THE ROKWRAP AROUND THE PIPE WITH STEEL CABLE TIES, 50MM FROM EACH END AND THE REST AT CENTRES NOT EXCEEDING 150MM.
5. SLIDE THE ROKWRAP DOWN AGAINST THE SURFACE OF THE PLASTERBOARD.
6. APPLY A 20MM X 20MM CONE OF RYANFIRE MASTIC TO THE JOINT BETWEEN THE ROKWRAP AND THE TOP OF THE FLOOR.
7. REMOVE ANY EXCESS RYANFIRE MASTIC USING A DAMP CLOTH.



Products:	RYANFIRE ROKWRAP RYANFIRE MASTIC	
Approvals:	AS 1530.4/AS 4072.1	
BK:	254	
Ref:	23SFR00087 / 25SFR00053	
ID:	A, E, F / D	
Scenario:	Penetration seal to copper / steel pipes	
Services:	Up to Ø100mm copper pipes	
Construction:	Min 16mm thick FR plasterboard ceiling	
Annular:	Top	5-10mm
	Bottom	15-17mm
Fire Resistance:	Ø50mm	-/60/60
	Ø80mm	-/60/60
	Ø100mm	-/60/60

Web based drawings are for example only. Fire performance of any system is dependant on, but not limited too - size of opening, substrate, if penetrations are passing through, type, size and number - please refer to Ryanfire technical department for detailed and specific fire performance information.



RYANFIRE Technical Support:
info@ryanfire.co.nz - Tel 09 443 0362

Drawing Title
Ryanfire Rokwrap to copper pipes
16mm plasterboard ceiling

Scale	Date
NTS	April 2026

Drawing Number	Rev
V9.26	1.0

All errors and omissions excepted. The information contained within this drawing is believed to be correct on the date of publication, and is based upon tested and certified solutions. The policy of **Ryanfire Products** is one of constant improvement. Installers must ensure that they are following the latest published drawings, test evidence and instructions. Whilst **Ryanfire Products** will endeavour to keep its publications up to date, the accuracy of the information contained within this drawing may be affected by pertinent changes in the law or regulatory requirements and alterations or amendments to the specification of **the manufactured** products. Terms and conditions of sale apply.

Ryanfire Products owns and has copyright to these drawings. They are to be used only for the purpose for which they were intended and supplied and are not to be sold, transferred or made available for use by a third party. Any misuse of these drawings will result in legal proceedings.