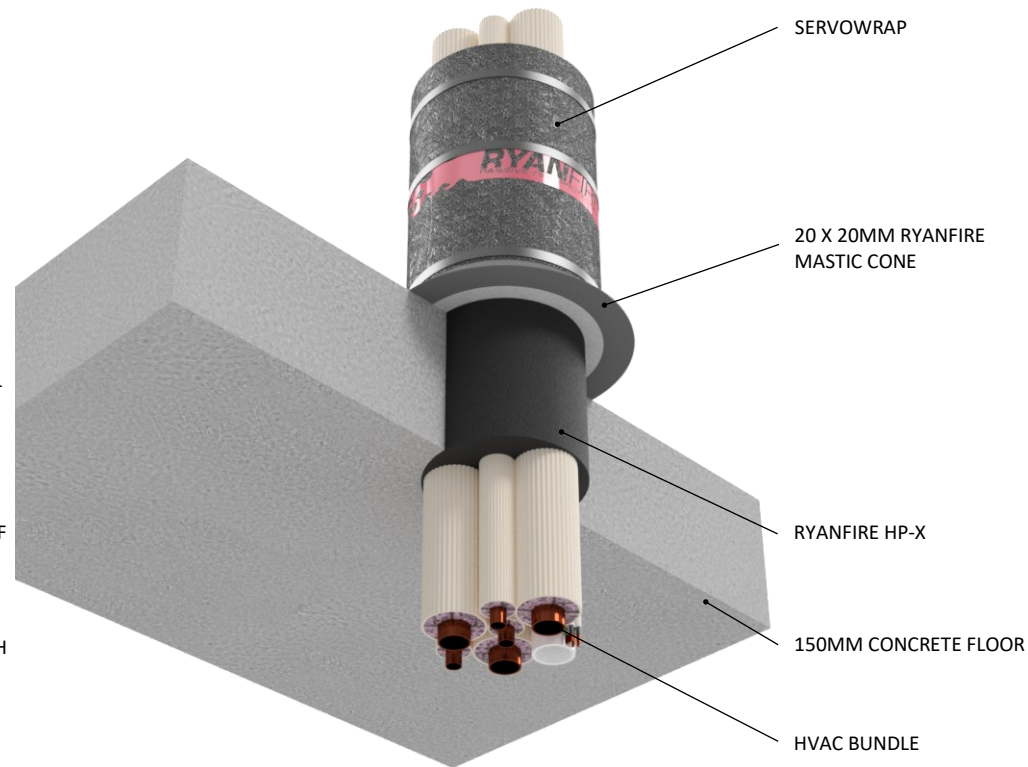


INSTALLATION INSTRUCTIONS

1. ENSURE THE APERTURE IS CLEAN AND FREE OF DUST AND DEBRIS.
2. APPLY RYANFIRE HP-X INTO THE ANNULAR GAP BETWEEN THE BUNDLE AND THE FLOOR TO THE FULL DEPTH OF THE FLOOR.
3. WRAP 1 LAYER OF 300MM WIDE RYANFIRE SERVOWRAP TIGHTLY AROUND THE BUNDLE WITH A 100MM OVERLAP, ON THE TOP SIDE OF THE FLOOR.
4. SLIDE THE SERVOWRAP UP AGAINST THE SURFACE OF THE FLOOR. SECURE THE SERVOWRAP AROUND THE HVAC BUNDLE WITH STEEL CABLE TIES, 50MM FROM EACH END AND 1 NOMINALLY IN THE CENTRE.
5. SEAL ANY EXPOSED EDGES OF THE SERVOWRAP WITH RYANFIRE FOIL TAPE.
6. APPLY A 20MM X 20MM RYANFIRE MASTIC CONE TO THE JOINT BETWEEN THE SERVOWRAP AND THE FLOOR.
7. CLEAN UP ANY EXCESS SEALANT WITH A DAMP CLOTH.



Products:	RYANFIRE HP-X RYANFIRE MASTIC RYANFIRE SERVOWRAP
Approvals:	AS 1530.4/AS 4072.1
BK:	252
Ref:	23SFR00079
ID:	E, F
Scenario:	Penetration seal to HVAC bundle (heat pump services)
Services:	Up to: 3 sets pair coil copper pipes 5 TPS cables Ø20mm uPVC pipe
Annular:	5-25mm
Construction:	150mm Concrete floor
Fire Integrity:	120 minutes
Fire Insulation:	120 minutes

* Note : You may remove the Servowrap to achieve -/30/-

Web based drawings are for example only. Fire performance of any system is dependant on, but not limited to, size of opening, substrate, if penetrations are passing through, type, size and number. Please refer to Ryanfire technical department for detailed and specific fire performance information.



RYANFIRE Technical Support:
info@ryanfire.co.nz - Tel 09 443 0362

Drawing Title
**HP-X & Servowrap to HVAC bundle
150mm concrete floor**

Scale	Date
NTS	July 2024

Drawing Number	Rev
V17.23	2.0

All errors and omissions excepted. The information contained within this drawing is believed to be correct on the date of publication, and is based upon tested and certified solutions. The policy of Ryanfire Products is one of constant improvement. Installers must ensure that they are following the latest published drawings, test evidence and instructions. Whilst Ryanfire Products will endeavour to keep its publications up to date, the accuracy of the information contained within this drawing may be affected by pertinent changes in the law or regulatory requirements and alterations or amendments to the specification of the manufactured products. Terms and conditions of sale apply.

Ryanfire Products owns and has copyright to these drawings. They are to be used only for the purpose for which they were intended and supplied and are not to be sold, transferred or made available for use by a third party. Any misuse of these drawings will result in legal proceedings.