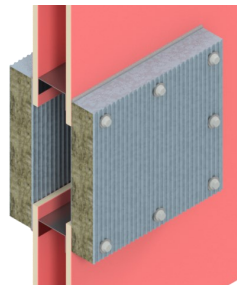
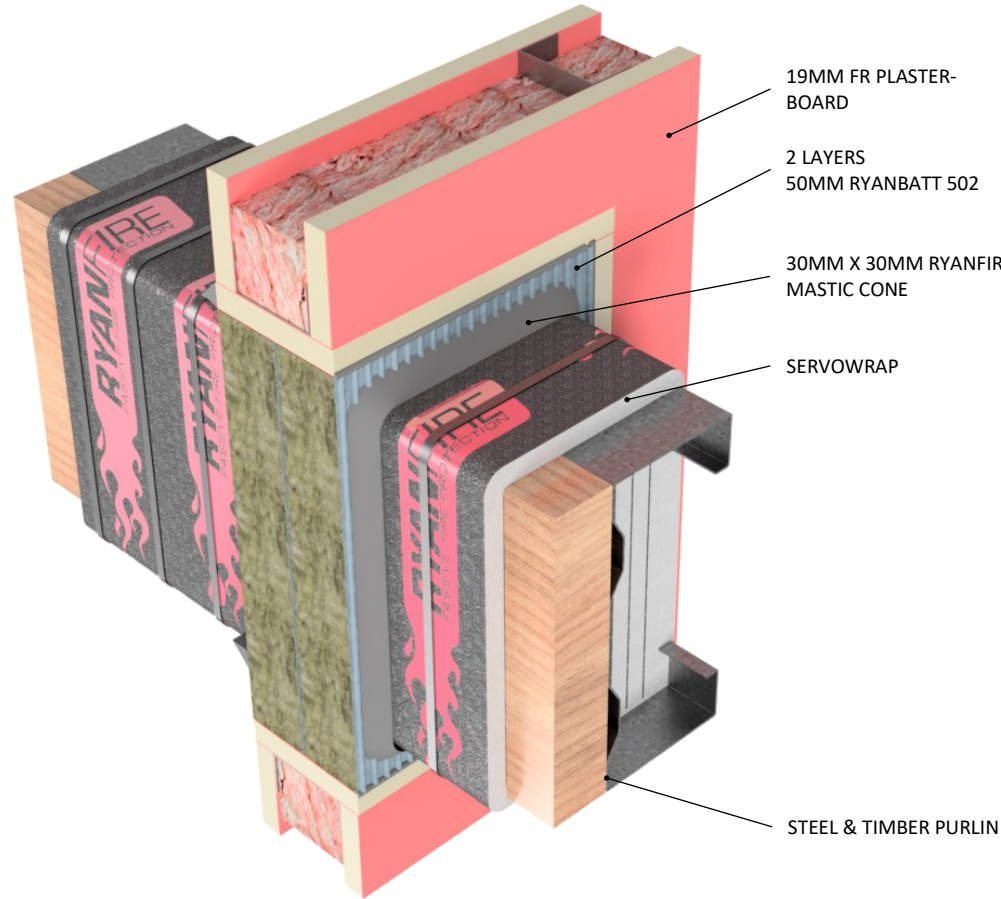


INSTALLATION INSTRUCTIONS

1. ENSURE THE APERTURE IS CLEAN AND FREE OF DUST AND DEBRIS.
2. CUT THE RYANBATT 502 TO THE REQUIRED SIZE TO FIT TIGHTLY INTO THE FULLY LINED APERTURE.
3. CUT THE RYANBATT 502 TO FIT TIGHTLY AROUND THE STEEL PURLINS.
4. CUT THE RYANBATT ACROSS THE SHORTEST DIMENSION INCORPORATING THE MIDPOINT OF THE PENETRATION TO ENABLE THE BOARD TO BE FITTED INTO THE APERTURE.
5. APPLY RYANFIRE BRUSH GRADE MASTIC TO ALL THE INTERNAL EDGES OF THE APERTURE AND TO ALL THE EXPOSED & CUT EDGES OF THE RYANBATT.
6. INSERT THE RYANBATT INTO THE OPENING TO SIT FLUSH WITH THE SURFACE OF THE WALL.
7. CUT SOME RYANBATT 502 TO FIT ONTO THE INTERNAL WEBBING OF THE C PURLIN.
8. COAT THE CUT AND EXPOSED EDGES OF THE RYANBATT WITH BRUSH GRADE MASTIC.
9. COMPRESSION FIT THE RYANBATT INTO THE PURLIN WEBBING IN LINE WITH THE SURFACE OF THE WALL.
10. APPLY A 5MM BEAD OF RYANFIRE MASTIC TO THE PERIMETER OF THE RYANBATT AND TO ANY JOINTS AND GAPS.
11. WRAP 1 LAYER OF 300MM WIDE SERVOWRAP AROUND THE PURLIN & TIMBER WITH A 100MM OVERLAP. SLIDE THE SERVOWRAP UP AGAINST THE SURFACE OF THE RYANBATT. PACK OUT THE GAPS IN THE WEBBING WITH ADDITIONAL LAYERS OF SERVOWRAP.
12. SECURE THE SERVOWRAP AROUND THE PURLINS WITH STEEL CABLES TIES, 50MM FROM EACH END AND ONE NOMINALLY IN THE CENTRE.
13. APPLY A 30X30MM CONE OF RYANFIRE MASTIC TO THE JOINT BETWEEN THE PURLINS AND THE RYANBATT.
14. USE FOIL TAPE TO ANY CUT AND EXPOSED EDGES OF THE SERVOWRAP.
15. REPEAT THIS PROCESS TO THE OPPOSITE SIDE OF THE WALL.



**THIS SYSTEM MAY BE INSTALLED USING A PATRESS FIT CONFIGURATION.
PLEASE CONTACT RYANFIRE TECHNICAL SUPPORT
FOR MORE INFORMATION.**

Products:	RYANBATT 502 RYANFIRE MASTIC RYANFIRE BRUSH GRADE MASTIC RYANFIRE SERVOWRAP
Approval:	AS 1530.4/AS 4072.1
BK:	224
Ref:	23SFR00042
ID:	C
Scenario:	Penetration seal to Steel purlin + timber
Penetration:	250mm steel C-purlin + 250mm x 45mm timber
Construction:	102mm FR plasterboard
Fire Integrity:	120 minutes
Fire Insulation:	120 minutes

Web based drawings are for example only. Fire performance of any system is dependant on, but not limited to, size of opening, substrate, if penetrations are passing through, type, size and number. Please refer to Ryanfire technical department for detailed and specific fire performance information.



RYANFIRE Technical Support:
info@ryanfire.co.nz - Tel 09 443 0362

Drawing Title
**Ryanbatt 502 to steel purlin + timber
102mm plasterboard wall**

Scale	NTS	Date	July 2024
Drawing Number	V64.18	Rev	2.0

All errors and omissions excepted. The information contained within this drawing is believed to be correct on the date of publication, and is based upon tested and certified solutions. The policy of Ryanfire Products is one of constant improvement. Installers must ensure that they are following the latest published drawings, test evidence and instructions. Whilst Ryanfire Products will endeavour to keep its publications up to date, the accuracy of the information contained within this drawing may be affected by pertinent changes in the law or regulatory requirements and alterations or amendments to the specification of the manufactured products. Terms and conditions of sale apply.

Ryanfire Products owns and has copyright to these drawings. They are to be used only for the purpose for which they were intended and supplied and are not to be sold, transferred or made available for use by a third party. Any misuse of these drawings will result in legal proceedings.