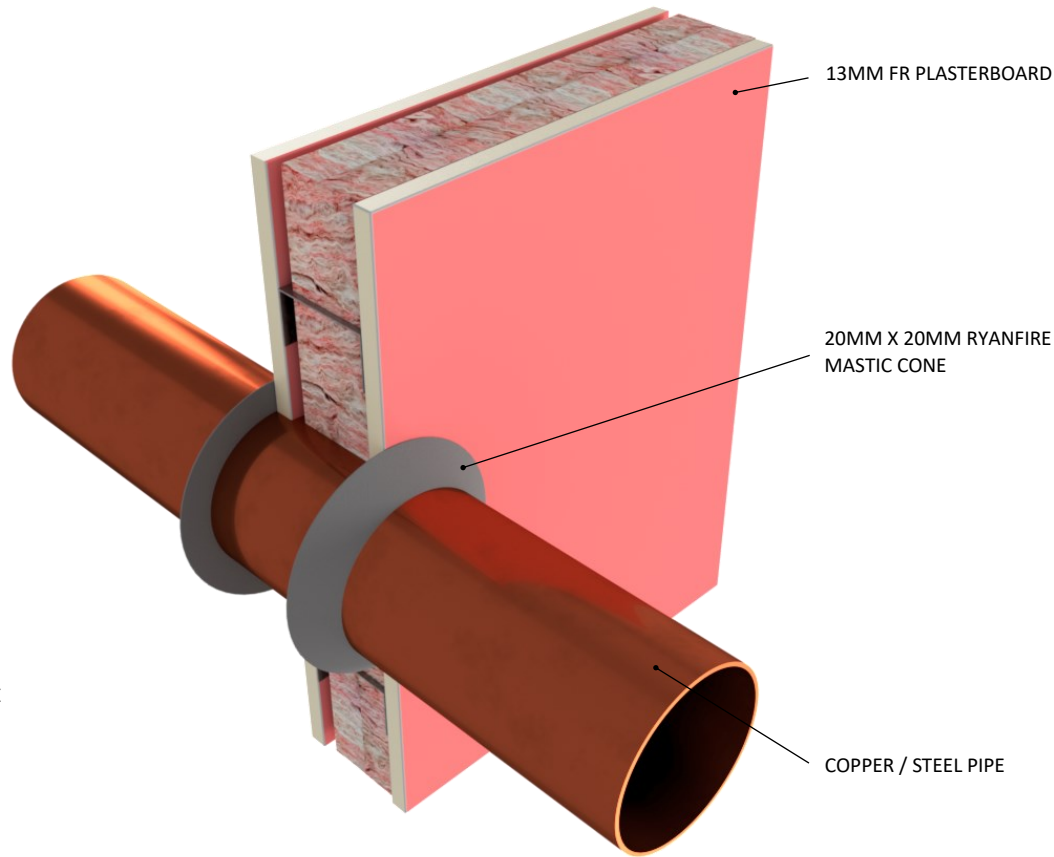


**INSTALLATION INSTRUCTIONS**

1. ENSURE THE APERTURE IS CLEAN AND FREE DUST AND DEBRIS.
2. APPLY 20MM X 20MM CONE OF RYANFIRE MASTIC AROUND THE JUNCTION BETWEEN THE COPPER PIPE AND THE PLASTERBOARD WALL.
3. REMOVE ANY EXCESS RYANFIRE MASTIC USING A DAMP CLOTH.
4. REPEAT THIS PROCESS ON THE OPPOSITE SIDE OF THE WALL.



<b>Products:</b>	<b>RYANFIRE MASTIC</b>
<b>Approvals:</b>	<b>AS 1530.4/AS 4072.1</b>
<b>BK:</b>	<b>146</b>
<b>Ref:</b>	<b>22SFR00038</b>
<b>ID:</b>	<b>D-F</b>
<b>Scenario:</b>	Penetration seal to copper / steel pipes
<b>Services:</b>	Up to Ø100mm copper pipes Up to Ø150mm steel pipes
<b>Construction:</b>	90mm FR plasterboard / Masonry wall
<b>Annular:</b>	0-5mm
<b>Fire Integrity:</b>	60 minutes
<b>Fire Insulation:</b>	0 minutes

Web based drawings are for example only. Fire performance of any system is dependant on, but not limited to size of opening, substrate, if penetrations are passing through, type, size and number. Please refer to Ryanfire technical department for detailed and specific fire performance information.



Client

Job Title

Drawing Title  
**Ryanfire Mastic to copper/steel pipes  
 90mm plasterboard wall**

Scale	Date	
<b>NTS</b>	<b>July 2024</b>	
Sheet Size	Drawn By	
<b>A3</b>		
Drawing Number	Rev	
<b>V1.11</b>		<b>2.0</b>

**Please note:**  
 Ryanfire Products owns and has copyright in these drawings. They are to be used only for the purpose for which they were intended and supplied and are not to be sold, transferred or made available for use by a third party.  
 Any misuse of these drawings will result in legal proceedings.

**All errors and omissions excepted** - the Information contained within this drawing is believed to be correct on the date of publication, and is based upon tested and certified solutions. The policy of **RyanFire Products** is one of constant improvement. Installers must therefore ensure that they are following the latest published drawings, test evidence and instructions. Whilst **RyanFire Products** will endeavour to keep its publications up to date, the accuracy of the information contained within this drawing may be affected by pertinent changes in the law or regulatory requirements and alterations or amendments to the specification of the **manufactured** products. Terms and conditions of sale apply.

RYANFIRE Technical Support: info@ryanfire.co.nz - Tel 09 443 0362