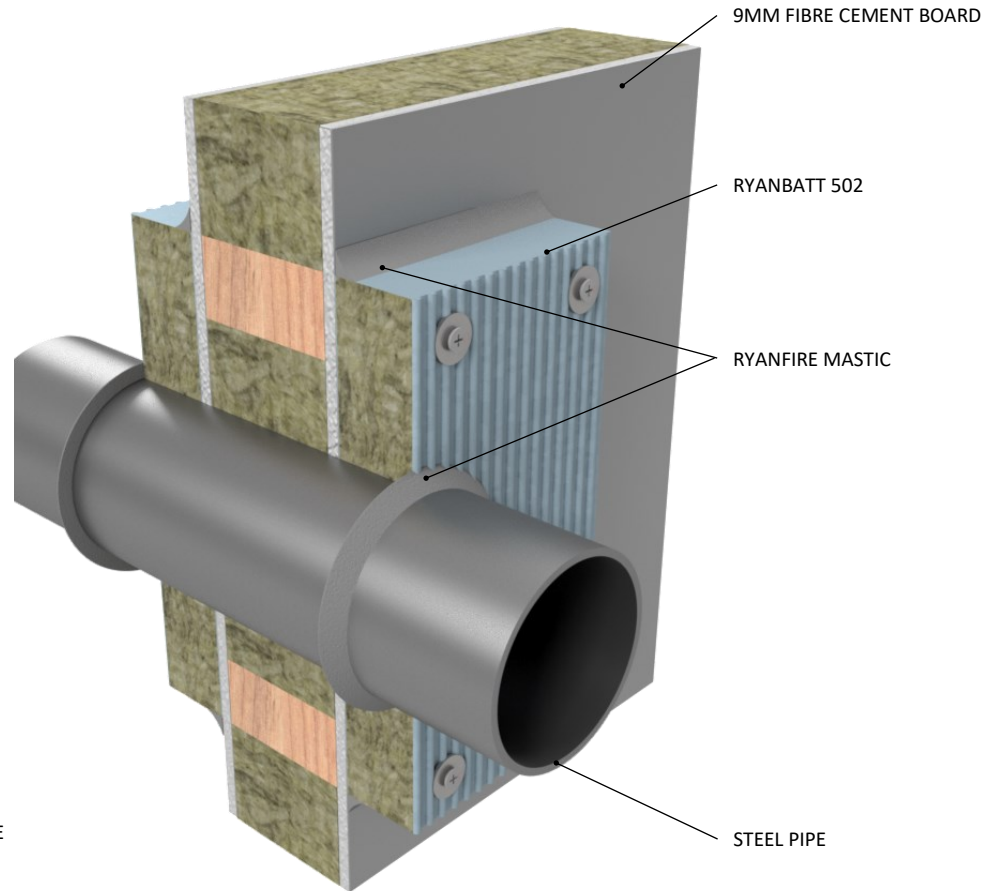


INSTALLATION INSTRUCTIONS

1. ENSURE THE APERTURE IS CLEAN AND FREE OF DUST AND DEBRIS.
2. CUT THE RYANBATT 502 SO THAT IT OVERLAPS MINIMUM 100MM FROM THE EDGE OF THE APERTURE IN ALL DIRECTIONS, AND SO THAT IT FITS TIGHTLY AROUND THE PIPE. THE RYANBATT MUST BE FIXED INTO THE WALL FRAMING.
3. CUT THE BOARD IN TWO PIECES, ACROSS THE SHORTEST DIMENSION, THROUGH THE MIDPOINT OF THE PENETRATION TO ALLOW IT TO BE FIXED INTO PLACE.
4. APPLY RYANFIRE BRUSH GRADE MASTIC TO ALL CUT AND EXPOSED EDGES OF THE RYANBATT 502.
5. APPLY A BEAD OF RYANFIRE MASTIC TO THE PERIMETER OF THE MATING FACE OF THE RYANBATT AND FIX IT TO THE WALL USING 75MM DRYWALL SCREWS AND PENNY WASHERS, 50MM FROM EACH EDGE.
6. APPLY A NOMINAL 5MM BEAD OF RYANFIRE MASTIC TO THE JUNCTION BETWEEN THE PIPE AND THE RYANBATT 502, AND TO THE JUNCTION BETWEEN THE RYANBATT AND THE WALL.
7. REPEAT THIS PROCESS ON THE OPPOSITE SIDE OF THE WALL.
8. REMOVE ANY EXCESS SEALANT WITH A DAMP CLOTH.



| | |
|-------------------------|---|
| Products: | RYANBATT 502 RYANFIRE MASTIC RYANFIRE BRUSH GRADE MASTIC |
| Approvals: | AS 1530.4/AS 4072.1 |
| BK: | 177 |
| Ref: | 22SFR00068 |
| ID: | D |
| Scenario: | Penetration seal to steel pipes |
| Services: | Up to Ø100mm steel pipes |
| Construction: | 108mm fibre cement board wall |
| Annular: | 0-5mm |
| Fire Integrity: | 60 minutes |
| Fire Insulation: | 45 minutes |

Web based drawings are for example only. Fire performance of any system is dependant on, but not limited to size of opening, substrate, if penetrations are passing through, type, size and number. Please refer to Ryanfire technical department for detailed and specific fire performance information.



RYANFIRE Technical Support:
info@ryanfire.co.nz - Tel 09 443 0362

Drawing Title
**Ryanbatt 502 to steel pipes
108mm fibre cement board wall**

| | |
|------------|------------------|
| Scale | Date |
| NTS | July 2024 |

| | |
|----------------|------------|
| Drawing Number | Rev |
| V1.13 | 3.0 |

All errors and omissions excepted. The information contained within this drawing is believed to be correct on the date of publication, and is based upon tested and certified solutions. The policy of Ryanfire Products is one of constant improvement. Installers must ensure that they are following the latest published drawings, test evidence and instructions. Whilst Ryanfire Products will endeavour to keep its publications up to date, the accuracy of the information contained within this drawing may be affected by pertinent changes in the law or regulatory requirements and alterations or amendments to the specification of the manufactured products. Terms and conditions of sale apply.

Ryanfire Products owns and has copyright to these drawings. They are to be used only for the purpose for which they were intended and supplied and are not to be sold, transferred or made available for use by a third party. Any misuse of these drawings will result in legal proceedings.