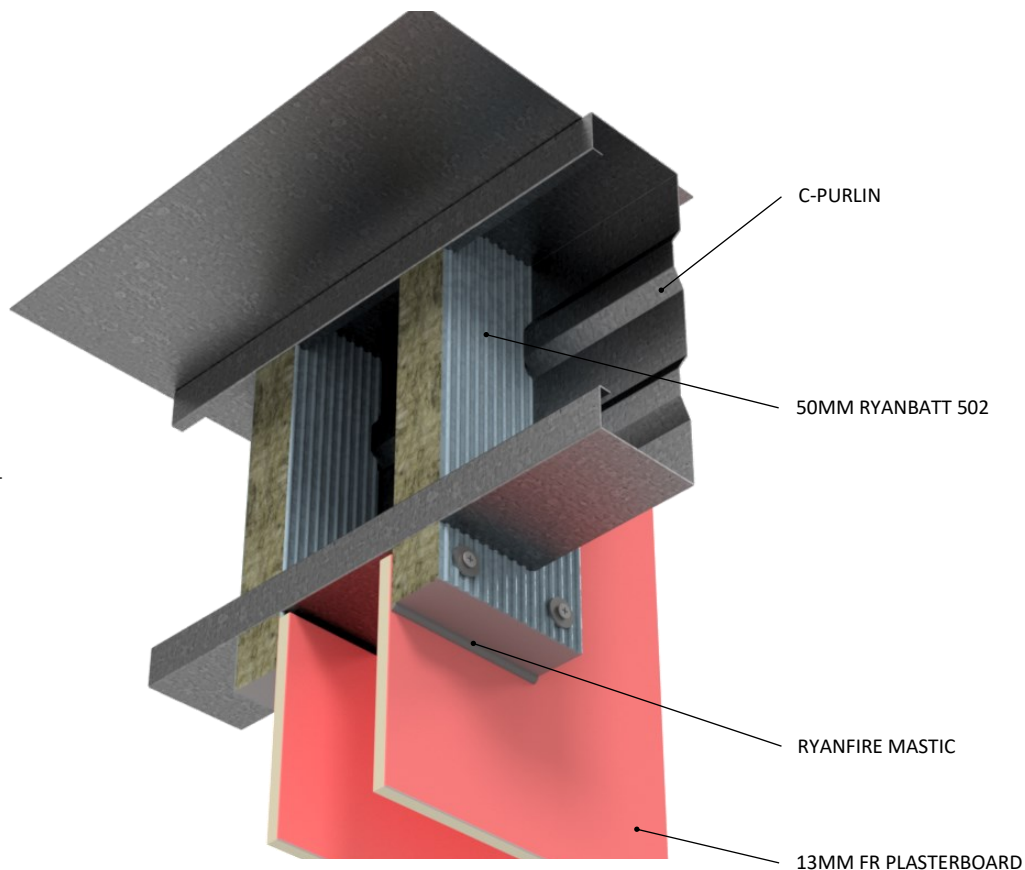


INSTALLATION INSTRUCTIONS

1. ENSURE THE APERTURE IS CLEAN AND FREE DUST AND DEBRIS.
2. CUT THE RYANBATT 502 TO THE REQUIRED SIZE AND SHAPE TO FIT TIGHTLY AROUND THE C PURLIN. THE BOARD SHOULD OVERLAP THE APERTURE BY 50MM.
3. APPLY A 50MM WIDE STRIP OF RYANFIRE BRUSH GRADE MASTIC AROUND THE PERIMETER OF THE APERTURE.
4. APPLY A 50MM STRIP OF RYANFIRE BRUSH GRADE MASTIC TO THE PERIMETER OF THE BOARD WHERE IT WILL MATE WITH THE WALL.
5. POSITION THE RYANBATT 502 OVER THE APERTURE AND AROUND THE PURLIN AND FIX INTO POSITION USING 75MM LONG STEEL SCREWS AND PENNY WASHERS AT CENTRES NOT EXCEEDING 200MM, 25MM FROM THE EDGE OF THE BOARD.
6. CUT SOME RYANBATT 502 TO FIT INTO THE INTERNAL WEBBING OF THE C PURLIN.
7. COAT THE CUT AND EXPOSED EDGES WITH BRUSH GRADE MASTIC.
8. COMPRESSION FIT THE RYANBATT INTO THE C PURLIN WEBBING IN LINE WITH THE SURFACE MOUNTED RYANBATT.
9. COAT ALL REMAINING CUT AND EXPOSED EDGES OF THE RYANBATT 502 WITH BRUSH GRADE MASTIC.
10. SEAL ALL GAPS AND JOINTS WITH RYANFIRE MASTIC.
11. REPAIR ANY DAMAGE THAT MAY HAVE OCCURRED TO THE COATING DURING INSTALLATION USING RYANFIRE MASTIC.
12. REPEAT THIS PROCESS TO THE OPPOSITE SIDE OF THE WALL.



Products:	RYANBATT 502 RYANFIRE MASTIC RYANFIRE BRUSH GRADE MASTIC
Approval:	AS 1530.4/AS 4072.1
BK:	61
Ref:	PF 19041
ID:	26
Scenario:	Penetration seal to steel purlins
Penetration:	Steel 300 C-Purlin
Construction:	126mm FR plasterboard / Masonry wall
Fire Integrity:	60 minutes
Fire Insulation:	60 minutes

Web based drawings are for example only, fire performance of any system is dependant on, but not limited to size of opening, substrate, if penetrations are passing through, type, size and number. Please refer to Ryanfire technical department for detailed and specific fire performance information.



Client

Job Title

Drawing Title

**Ryanbatt 502 to steel C purlins
126mm plasterboard wall**

Scale	NTS	Date	July 2024
Sheet Size	A3	Drawn By	
Drawing Number	V64.7	Rev	2.0

Please note:
Ryanfire Products owns and has copyright in these drawings. They are to be used only for the purpose for which they were intended and supplied and are not to be sold, transferred or made available for use by a third party.

Any misuse of these drawings will result in legal proceedings.

All errors and omissions excepted - the Information contained within this drawing is believed to be correct on the date of publication, and is based upon tested and certified solutions. The policy of **RyanFire Products** is one of constant improvement. Installers must therefore ensure that they are following the latest published drawings, test evidence and instructions. Whilst **RyanFire Products** will endeavour to keep its publications up to date, the accuracy of the information contained within this drawing may be affected by pertinent changes in the law or regulatory requirements and alterations or amendments to the specification of the **manufactured** products. Terms and conditions of sale apply.

RYANFIRE Technical Support: info@ryanfire.co.nz - Tel 09 443 0362