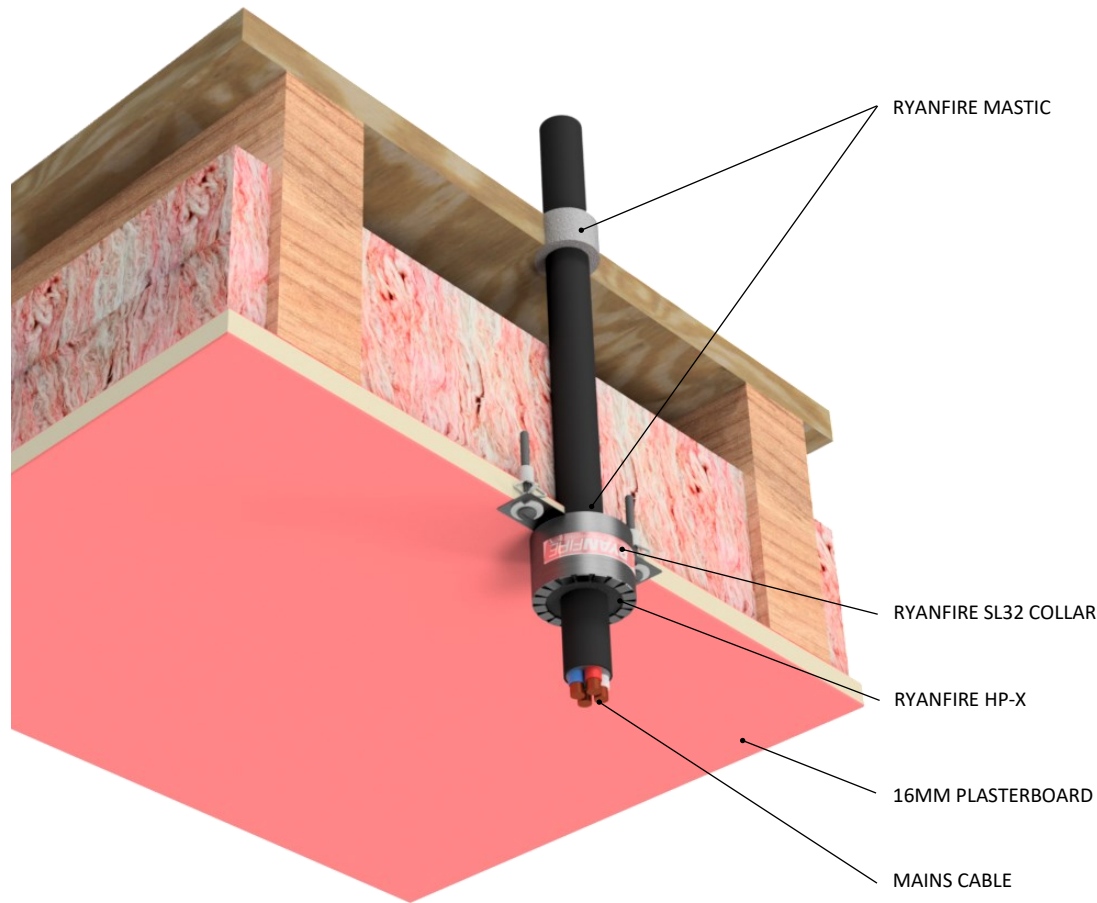


INSTALLATION INSTRUCTIONS

1. ENSURE THE APERTURE IS CLEAN AND FREE OF DUST AND DEBRIS.
2. APPLY RYANFIRE MASTIC TO SMOKE SEAL THE GAP BETWEEN THE CABLE AND THE PLASTERBOARD.
3. SELECT THE RYANFIRE SL32 COLLAR TO FIT AROUND THE CABLE.
4. FIT THE SL COLLAR AROUND THE CABLE AND SLIDE IT UP UNTIL IT IS FLUSH WITH THE CEILING.
5. SECURE THE SL COLLAR IN PLACE USING MINIMUM 40MM LONG HOLLOW WALL ANCHORS.
6. APPLY RYANFIRE HP-X INTO THE ANNULAR GAP BETWEEN THE COLLAR AND THE CABLE TO THE FULL DEPTH OF THE COLLAR.
7. APPLY A BEAD OF RYANFIRE MASTIC TO SEAL THE GAP BETWEEN THE BUNDLE AND THE FLOOR BOARD.
8. CLEAN ANY EXCESS SEALANT USING A DAMP CLOTH.



Products:	RYANFIRE SL COLLAR RYANFIRE HP-X RYANFIRE MASTIC
Approvals:	AS 1530.4/AS 4072.1
BK:	105 / 181
Ref:	21SFR00057 / 22SFR00072
ID:	D / A
Scenario:	Penetration seal to cable
Services:	Up to Ø25mm (185mm ²) mains cable
Construction:	Min 16mm thick FR plasterboard ceiling
Fire Integrity:	60 minutes
Fire Insulation:	60 minutes

Web based drawings are for example only. Fire performance of any system is dependant on, but not limited to size of opening, substrate, if penetrations are passing through, type, size and number. Please refer to Ryanfire technical department for detailed and specific fire performance information.



RYANFIRE Technical Support:
info@ryanfire.co.nz - Tel 09 443 0362

Drawing Title
**SL Collar & HP-X to mains cable
16mm plasterboard ceiling**

Scale	Date
NTS	July 2024
Drawing Number	Rev
V29.28	3.0

All errors and omissions excepted. The information contained within this drawing is believed to be correct on the date of publication, and is based upon tested and certified solutions. The policy of Ryanfire Products is one of constant improvement. Installers must ensure that they are following the latest published drawings, test evidence and instructions. Whilst Ryanfire Products will endeavour to keep its publications up to date, the accuracy of the information contained within this drawing may be affected by pertinent changes in the law or regulatory requirements and alterations or amendments to the specification of the manufactured products. Terms and conditions of sale apply.

Ryanfire Products owns and has copyright to these drawings. They are to be used only for the purpose for which they were intended and supplied and are not to be sold, transferred or made available for use by a third party. Any misuse of these drawings will result in legal proceedings.