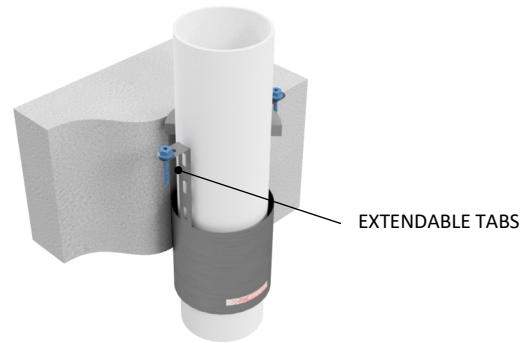
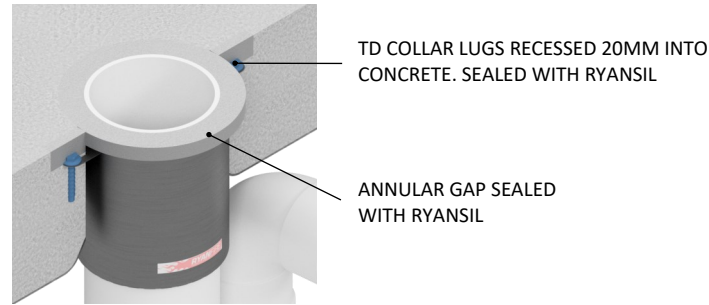
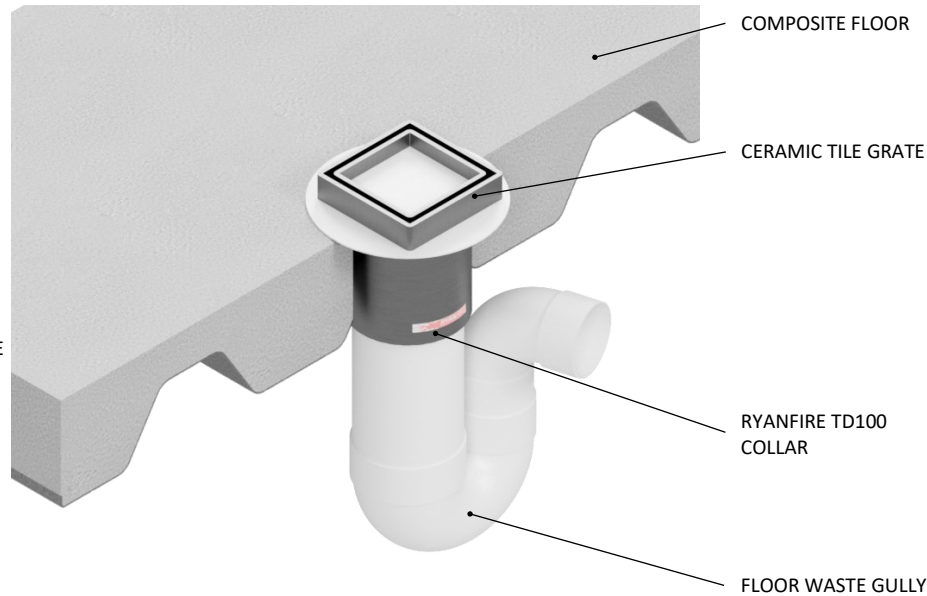


INSTALLATION INSTRUCTIONS

1. ENSURE THE APERTURE IS CLEAN AND FREE OF LOOSE CEMENT, DUST AND DEBRIS.
2. CUT 20MM DEEP RECESSES INTO THE CONCRETE FOR THE TD COLLAR MOUNTING LUGS.
3. SELECT THE TD100 COLLAR TO FIT AROUND THE FLOOR WASTE GULLY.
4. POSITION THE TD COLLAR SO THAT THE LUGS FIT INTO THE RECESSES.
5. FIX THE COLLAR TO THE FLOOR USING 32MM CONCRETE ANCHOR BOLTS. ENSURE ALL FIXING POINTS ARE USED. SEAL THE RECESSES WITH RYANSIL.
6. APPLY RYANSIL TO SEAL THE ANNULAR GAP BETWEEN THE PIPE AND THE COLLAR.
7. APPLY RYANSIL TO SEAL THE ANNULAR GAP BETWEEN THE TD COLLAR AND THE FLOOR.
8. INSTALL THE REST OF THE FLOOR WASTE SYSTEM ACCORDING TO THE MANUFACTURERS SPECIFICATIONS.
9. CLEAN UP ANY EXCESS SEALANT.



On the underside of the substrate, the TD Collar may be exposed no more than 80mm, or be recessed no more than 10mm.

TD COLLAR SIZE	CORE HOLE DIAMETER
TD 40	Ø65-Ø72mm
TD 50	Ø70-Ø82mm
TD 65	Ø90-Ø102mm
TD 80	Ø105-Ø112mm
TD 100	Ø140-Ø142mm

Products: RYANFIRE TD COLLAR RYANSIL
Approvals: AS 1530.4/AS 4072.1
BK: 103
Ref: 21SFR00047
ID: B
Scenario: Penetration seal to uPVC Floor Waste Gully
Services: Ø100mm uPVC Floor Waste + ceramic tile grate
Construction: 125mm composite floor
Core Hole: Ø142mm
Annular: 15mm max
Fire Integrity: 90 minutes
Fire Insulation: 90 minutes

Web based drawings are for example only. Fire performance of any system is dependant on, but not limited to, size of opening, substrate, if penetrations are passing through, type, size and number. Please refer to Ryanfire technical department for detailed and specific fire performance information.



RYANFIRE Technical Support:
 info@ryanfire.co.nz - Tel 09 443 0362

Drawing Title
**TD Collar to PVC FWG & ceramic tile
 125mm composite floor**

Scale	Date
NTS	July 2024
Drawing Number	Rev
V22.31	4.0

All errors and omissions excepted. The information contained within this drawing is believed to be correct on the date of publication, and is based upon tested and certified solutions. The policy of Ryanfire Products is one of constant improvement. Installers must ensure that they are following the latest published drawings, test evidence and instructions. Whilst Ryanfire Products will endeavour to keep its publications up to date, the accuracy of the information contained within this drawing may be affected by pertinent changes in the law or regulatory requirements and alterations or amendments to the specification of the manufactured products. Terms and conditions of sale apply.

Ryanfire Products owns and has copyright to these drawings. They are to be used only for the purpose for which they were intended and supplied and are not to be sold, transferred or made available for use by a third party. Any misuse of these drawings will result in legal proceedings.