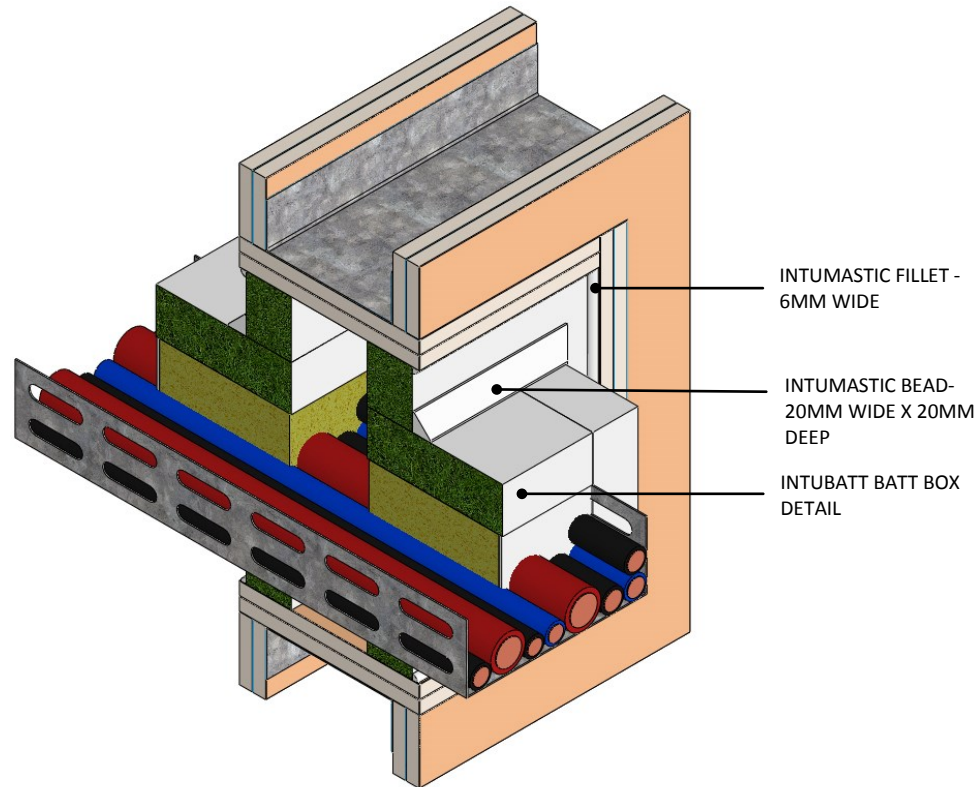


INSTALLATION INSTRUCTIONS

1. ENSURE THE APERTURE IS CLEAN AND FREE OF DEBRIS AND LOOSE CEMENT. REMOVE DUST FROM SURFACES REQUIRING INSTALLATION.
2. CUT THE INTUBATT TO FORM BATT BOX DETAIL AROUND CABLE TRAY, AS PER BATT BOX DETAIL DRAWING V44
3. POSITION THE BATT BOX AROUND THE PENETRATION AND POSITION THE BACK EDGE OF THE BATT BOX IN LINE WITH THE BACK SIDE OF THE PROPOSED INTUBATT FIRE SEAL.
4. CUT THE INTUBATT TO THE REQUIRED SIZE AND SHAPE, ENSURING THE INTUBATT WILL BE A TIGHT FIT TO ALL EDGES OF THE APERTURE.
5. CUT THE INTUBATT TO TIGHTLY FIT AROUND THE BATT BOX DETAIL.
6. CUT THE INTUBATT ACROSS THE SHORTEST DIMENSION INCORPORATING THE MIDPOINT OF THE BATT BOX TO ENABLE THE INTUBATT TO BE FITTED IN TO THE APERTURE.
7. APPLY INTUMASTIC TO ALL EDGES OF THE INTUBATT ENSURING THAT AN EVEN COVER IS ACHIEVED OVER THE ENTIRE EXPOSED THICKNESS OF THE INTUBATT. THIS SHOULD INCLUDE THE OUTER EDGES OF THE INTUBATT AND THE CUT ACROSS TO ALLOW INSTALLATION IN TO THE APERTURE.
8. INSERT THE INTUBATT IN TO THE OPENING
9. APPLY AN INTUMASTIC FILLET APPROXIMATELY 6MM WIDE TO THE PERIMETER WHERE THE INTUBATT MEETS THE PLASTERBOARD AND A 20MM X 20MM BEAD AROUND THE BATT BOX DETAIL. ENSURE THAT ALL GAPS BETWEEN INTUBATT AND THE SURROUNDING EDGES ARE FULLY FILLED.
10. REPAIR ANY DAMAGES TO THE COATING WHICH MAY HAVE OCCURRED DURING INSTALLATION USING BRUSH OR SPRAYING APPLICATION OF INTUMASTIC.
11. REPEAT ITEMS 2 -10 OF THE ABOVE TO THE OPPOSITE SIDE OF WALL ALLOWING A 30MM GAP BETWEEN BOTH LAYERS.



Products:	INTUBATT BATT BOX DETAIL
Approval:	AS 1530.4/AS 4072.1
BK:	1
Ref:	35084000
ID:	35
Scenario:	Penetration seal to cable tray.
Construction:	Fire rated gypsum / Masonry wall.
Fire Integrity:	120 minutes.
Insulation:	120 minutes.
Services:	Cable trays up to 500mm wide.

Web based drawings are for example only, fire performance of any system is dependant on, but not limited to size of opening, substrate, if penetrations are passing through, type, size and number. Please refer to Ryanfire technical department for detailed and specific fire performance information.



Client

Job Title

Drawing Title

Batt Box detail to Cable Tray in Gypsum Wall

Scale	NTS	Date	July 2019
Sheet Size	A3	Drawn By	
Drawing Number	V31	Rev	2.0

Please note:
Ryanfire Products Ltd owns and has copyright in these drawings. They are to be used only for the purpose for which they were intended and supplied and are not to be sold, transferred or made available for use by a third party.

Any misuse of these drawings will result in legal proceedings.

All errors and omissions excepted - the Information contained within this drawing is believed to be correct on the date of publication, and is based upon tested and certified solutions. The policy of **RyanFire Products Ltd** is one of constant improvement. Installers must therefore ensure that they are following the latest published drawings, test evidence and instructions. Whilst **RyanFire Products Ltd** will endeavour to keep its publications up to date, the accuracy of the information contained within this drawing may be affected by pertinent changes in the law or regulatory requirements and alterations or amendments to the specification of the **manufactured** products. Terms and conditions of sale apply.

RYANFIRE Technical Support: info@ryanfire.co.nz - Tel 09 443 0362