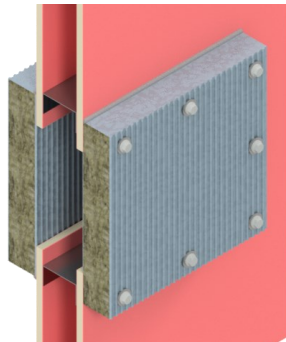
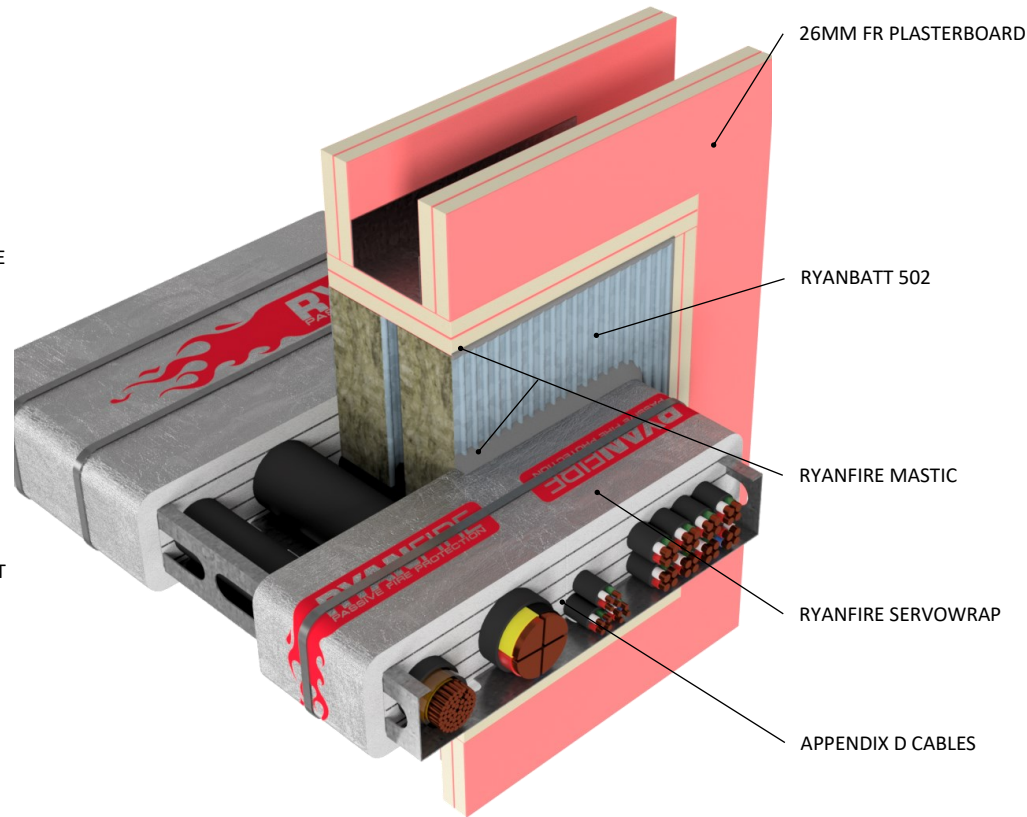


INSTALLATION INSTRUCTIONS

1. ENSURE THE APERTURE IS CLEAN AND FREE OF DUST AND DEBRIS.
2. CUT THE RYANBATT 502 TO THE REQUIRED SIZE TO FIT TIGHTLY INTO THE FULLY LINED APERTURE.
3. CUT THE RYANBATT 502 TO FIT TIGHTLY AROUND THE CABLE BUNDLE
4. CUT THE RYANBATT ACROSS THE SHORTEST DIMENSION INCORPORATING THE MIDPOINT OF THE PENETRATION TO ENABLE THE BOARD TO BE FITTED INTO THE APERTURE.
5. APPLY RYANFIRE BRUSH GRADE MASTIC TO ALL THE INTERNAL EDGES OF THE APERTURE AND TO ALL THE EXPOSED EDGES OF THE RYANBATT.
6. INSERT THE RYANBATT 502 INTO THE OPENING TO SIT FLUSH WITH THE SURFACE OF THE WALL.
7. APPLY A 5MM BEAD OF RYANFIRE MASTIC TO THE PERIMETER OF THE RYANBATT AND TO ANY JOINTS AND GAPS.
8. WRAP 1 LAYER OF 300MM WIDE RYANFIRE SERVOWRAP AROUND THE CABLE PENETRATION WITH A 100MM OVERLAP. PRESS THE SERVOWRAP UP AGAINST THE SURFACE OF THE RYANBATT 502.
9. PACK OUT ANY GAPS ALONG THE TOP OF THE CABLE TRAY WITH ADDITIONAL LAYERS OF SERVOWRAP.
10. SECURE THE SERVOWRAP AROUND THE CABLE BUNDLE USING STEEL CABLE TIES 50MM FROM EACH END AND 1 NOMINALLY IN THE CENTRE.
11. APPLY A 50X50MM BEAD OF RYANFIRE MASTIC TO THE JOINT BETWEEN THE SERVOWRAP AND THE RYANBATT.
12. SEAL ANY EXPOSED EDGES OF THE SERVOWRAP WITH FOIL TAPE.
13. REPEAT THIS PROCESS TO THE OPPOSITE SIDE OF THE WALL.



**THIS SYSTEM MAY BE INSTALLED USING A PATTESS FIT CONFIGURATION.
PLEASE CONTACT RYANFIRE TECHNICAL SUPPORT
FOR MORE INFORMATION.**

Products:	RYANBATT 502 RYANFIRE MASTIC RYANFIRE SERVOWRAP
Approval:	AS 1530.4:2014/AS 4072.1:2005
BK:	14 / 23 / 33
Ref:	PF 20099 / PF 21005 / FAS 210123
ID:	B / C / Table 61,63
Scenario:	Penetration seal to AS1530.4 Appendix D cable bundles on a cable tray
Services:	D1 cable configuration D2 cable configuration
Construction:	116mm FR plasterboard / Masonry wall / KOROK® wall
Fire Integrity:	120 minutes
Fire Insulation:	120 minutes

Web based drawings are for example only. Fire performance of any system is dependant on, but not limited to, size of opening, substrate, if penetrations are passing through, type, size and number. Please refer to Ryanfire technical department for detailed and specific fire performance information.



RYANFIRE Technical Support:
info@ryanfire.co.nz - Tel 09 443 0362

Drawing Title
**Ryanbatt 502 to cables & cable tray
plasterboard wall**

Scale	NTS	Date	April 2025
Drawing Number	V53.23	Rev	7.0

All errors and omissions excepted. The information contained within this drawing is believed to be correct on the date of publication, and is based upon tested and certified solutions. The policy of Ryanfire Products is one of constant improvement. Installers must ensure that they are following the latest published drawings, test evidence and instructions. Whilst Ryanfire Products will endeavour to keep its publications up to date, the accuracy of the information contained within this drawing may be affected by pertinent changes in the law or regulatory requirements and alterations or amendments to the specification of the manufactured products. Terms and conditions of sale apply.

Ryanfire Products owns and has copyright to these drawings. They are to be used only for the purpose for which they were intended and supplied and are not to be sold, transferred or made available for use by a third party. Any misuse of these drawings will result in legal proceedings.