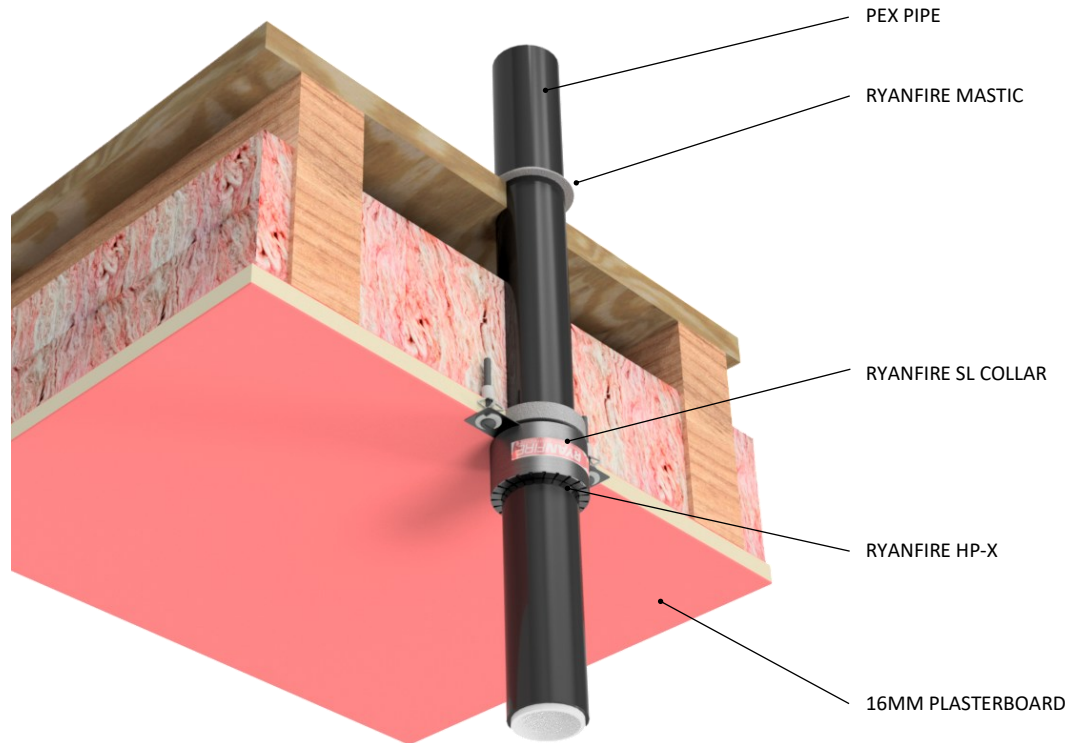


### INSTALLATION INSTRUCTIONS

1. ENSURE THE APERTURE IS CLEAN AND FREE OF DUST AND DEBRIS.
2. APPLY RYANFIRE MASTIC TO INTO THE ANNULAR GAP BETWEEN THE PIPE AND THE PLASTERBOARD.
3. SELECT THE CORRECT SIZE RYANFIRE SL COLLAR TO FIT AROUND THE PEX PIPE.
4. FIT THE SL COLLAR AROUND THE PIPE AND SLIDE IT UP AGAINST THE CEILING.
5. SECURE THE SL COLLAR IN PLACE USING MINIMUM 40MM LONG HOLLOW WALL ANCHORS
6. APPLY RYANFIRE HP-X TO THE ANNULAR GAP BETWEEN THE SL COLLAR AND THE PIPE TO THE FULL DEPTH OF THE COLLAR.
7. APPLY A BEAD OF RYANFIRE MASTIC TO THE ANNULAR GAP BETWEEN THE PIPE AND THE FLOOR BOARD.



**Products:** RYANFIRE SL COLLAR  
RYANFIRE HP-X  
RYANFIRE MASTIC

**Approvals:** AS 1530.4:2014/AS 4072.1:2005

**BK:** 65 / 101 / 334

**Ref:** FRT 190271 / 215FR0056 / 255FR00020

**ID:** H / H / D - F

**Scenario:** Penetration seal to PEX pipes

**Services:** Up to Ø40mm PEX pipes

**Construction:** Min 16mm thick FR plasterboard ceiling

**Annular:** 0-5mm

**Fire Resistance:**

Pipe size	FRR
Ø16mm	-/60/60
Ø20mm	-/60/15
Ø25mm	-/60/60
Ø32mm	-/60/60
Ø40mm	-/60/30

Web based drawings are for example only. Fire performance of any system is dependant on, but not limited to, size of opening, substrate, if penetrations are passing through, type, size and number. Please refer to Ryanfire technical department for detailed and specific fire performance information.



RYANFIRE Technical Support:  
info@ryanfire.co.nz - Tel 09 443 0362

Drawing Title  
**SL Collar & HP-X to PEX pipes  
16mm plasterboard ceiling**

Scale <b>NTS</b>	Date <b>May 2026</b>
---------------------	-------------------------

Drawing Number <b>V22.9</b>	Rev <b>6.0</b>
--------------------------------	-------------------

All errors and omissions excepted. The information contained within this drawing is believed to be correct on the date of publication, and is based upon tested and certified solutions. The policy of Ryanfire Products is one of constant improvement. Installers must ensure that they are following the latest published drawings, test evidence and instructions. Whilst Ryanfire Products will endeavour to keep its publications up to date, the accuracy of the information contained within this drawing may be affected by pertinent changes in the law or regulatory requirements and alterations or amendments to the specification of the manufactured products. Terms and conditions of sale apply.

Ryanfire Products owns and has copyright to these drawings. They are to be used only for the purpose for which they were intended and supplied and are not to be sold, transferred or made available for use by a third party. Any misuse of these drawings will result in legal proceedings.