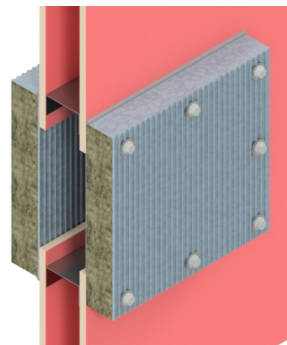
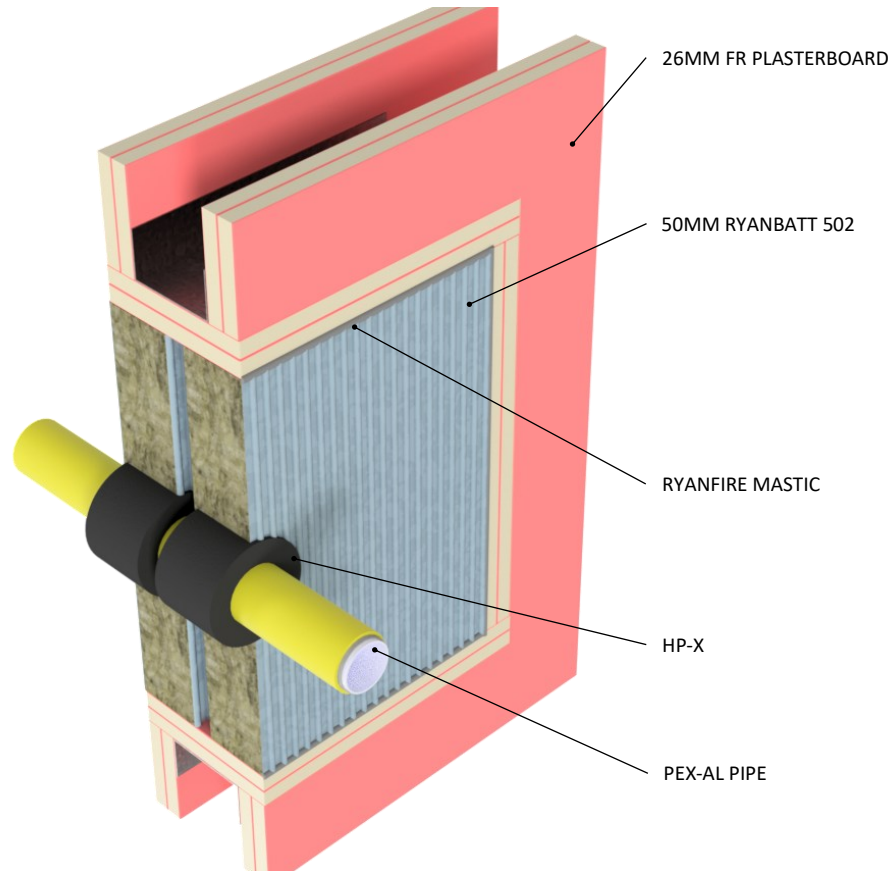


INSTALLATION INSTRUCTIONS

1. ENSURE THE APERTURE IS CLEAN AND FREE OF DUST AND DEBRIS.
2. CUT THE RYANBATT 502 TO THE REQUIRED SIZE TO FIT TIGHTLY INTO THE FULLY LINED APERTURE.
3. CUT THE RYANBATT TO FIT AROUND THE PEX PIPE. THE APERTURE MUST EQUAL THE PIPE DIAMETER PLUS THE ALLOWABLE 10 - 28MM ANNULAR GAP.
4. CUT THE RYANBATT ACROSS THE SHORTEST DIMENSION INCORPORATING THE MIDPOINT OF THE PENETRATION TO ENABLE THE BOARD TO BE FITTED INTO THE APERTURE.
5. APPLY RYANFIRE BRUSH GRADE MASTIC TO ALL THE INTERNAL EDGES OF THE APERTURE AND TO ANY CUT AND EXPOSED EDGES OF THE RYANBATT BOARD.
6. INSERT THE RYANBATT INTO THE OPENING TO SIT EITHER FLUSH WITH THE SURFACE OF THE WALL, OR CENTRALLY WITHIN THE PLANE OF THE WALL. IF FITTED CENTRALLY, APPLY MASTIC TO THE FACE OF THE 502 WHERE IT WILL JOIN WITH THE OTHER.
7. APPLY RYANFIRE HP-X INTO THE ANNULAR GAP BETWEEN THE PIPE AND THE RYANBATT TO THE FULL DEPTH OF THE BOARD (50MM).
8. APPLY A 5MM BEAD OF RYANFIRE MASTIC TO THE PERIMETER OF THE RYANBATT AND TO ANY JOINTS AND GAPS.
9. REPEAT THIS PROCESS ON THE OPPOSITE SIDE OF THE WALL.



**THIS SYSTEM MAY BE INSTALLED USING A PATRESS FIT CONFIGURATION.
PLEASE CONTACT RYANFIRE TECHNICAL SUPPORT
FOR MORE INFORMATION.**

Products: RYANBATT 502
RYANFIRE HP-X
RYANFIRE MASTIC
RYANFIRE BRUSH GRADE MASTIC

Approval: AS 1530.4:2014/AS 4072.1:2005

BK: 17 / 323 / 33

Ref: PF 20095 / 24SFR00068 / FAS 210123

ID: C, F / 15 / Table 57

Scenario: Penetration seal to PEX-AL pipes

Services: Up to Ø40mm PEX-AL (gas) pipes

Construction: 116mm FR plasterboard / Masonry wall / Korok wall

Annular: 10-28mm

Fire Resistance:

Pipe size	FRR
Ø16mm	-/120/120
Ø25mm	-/120/30
Ø40mm	-/90/30

Web based drawings are for example only. Fire performance of any system is dependant on, but not limited to, size of opening, substrate, if penetrations are passing through, type, size and number. Please refer to Ryanfire technical department for detailed and specific fire performance information.



RYANFIRE Technical Support:
info@ryanfire.co.nz - Tel 09 443 0362

Drawing Title
**Ryanbatt 502 & HP-X to PEX-AL pipe
116mm plasterboard wall**

Scale NTS	Date May 2026
Drawing Number V5.12	Rev 7.0

All errors and omissions excepted. The information contained within this drawing is believed to be correct on the date of publication, and is based upon tested and certified solutions. The policy of Ryanfire Products is one of constant improvement. Installers must ensure that they are following the latest published drawings, test evidence and instructions. Whilst Ryanfire Products will endeavour to keep its publications up to date, the accuracy of the information contained within this drawing may be affected by pertinent changes in the law or regulatory requirements and alterations or amendments to the specification of the manufactured products. Terms and conditions of sale apply.

Ryanfire Products owns and has copyright to these drawings. They are to be used only for the purpose for which they were intended and supplied and are not to be sold, transferred or made available for use by a third party. Any misuse of these drawings will result in legal proceedings.