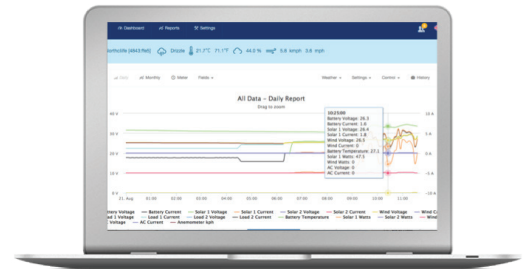


Smart Off-Grid Power Pack for Telecom

Telecommunications equipment is changing rapidly to adapt to global environments without reliable power or local support. Our Smart Off-Grid Power Pack solution delivers a highly reliable source of power using solar and hybrid solar, with built-in communications, and the ability to remotely monitor, control, and proactively manage these devices over the Internet. Clear Blue's expert service team provides the ongoing management service to deliver high reliability, long-life and peace of mind.

Product Features

- **Designed to support continuous loads in excess of 250W**
 - Individual management and control of multiple solar panel sources
 - Supports multiple batteries, using lead acid, lithium ion, or NiMH batteries
- **Multiple power sources can be managed independently**
 - Solar only
 - Solar and grid-connect - provides ability to draw power from the grid if required
 - Solar and diesel backup - with capability to send signal remotely to start and utilize when needed
- **Loads can be managed independently (e.g. RAN, WiFi, microwave backhaul, satellite, routers, etc.) with ability to:**
 - Do power and control restarts of individual loads remotely
 - View energy consumed in real-time
 - Track energy consumption against telecom traffic volume
 - Set alarms to allow workaround for any unmet load requirement
 - Emergency ridedthrough



Illumience Cloud remotely monitors, controls and services the system

- **Remote monitoring and reporting**
 - Monthly, daily and hourly REAL-TIME monitoring and reports
 - Global performance, data analytics
 - Dashboard map with location
 - Forward-looking system performance based on integrated weather forecasting
- **Remote troubleshooting tools including**
 - Solar panel test, cabling and connectivity integrity, remote short circuit reset
 - User-defined and configured alarms
- **Long battery life**
 - Lifecycle forecaster
 - Remote battery maintenance and revitalizer
 - Patented dynamic charging
- **Industry leading platform security and encryption**
- **Easy installation and validation**
 - Installer smartphone provisioning tool, customer and installer provisioning report
 - No network or software installation and configuration – plug it in and it works with our Illumience Cloud management service, anywhere in the world!
 - Color-coded connectors and more

Powerful Control. In the Cloud & Off the Grid.